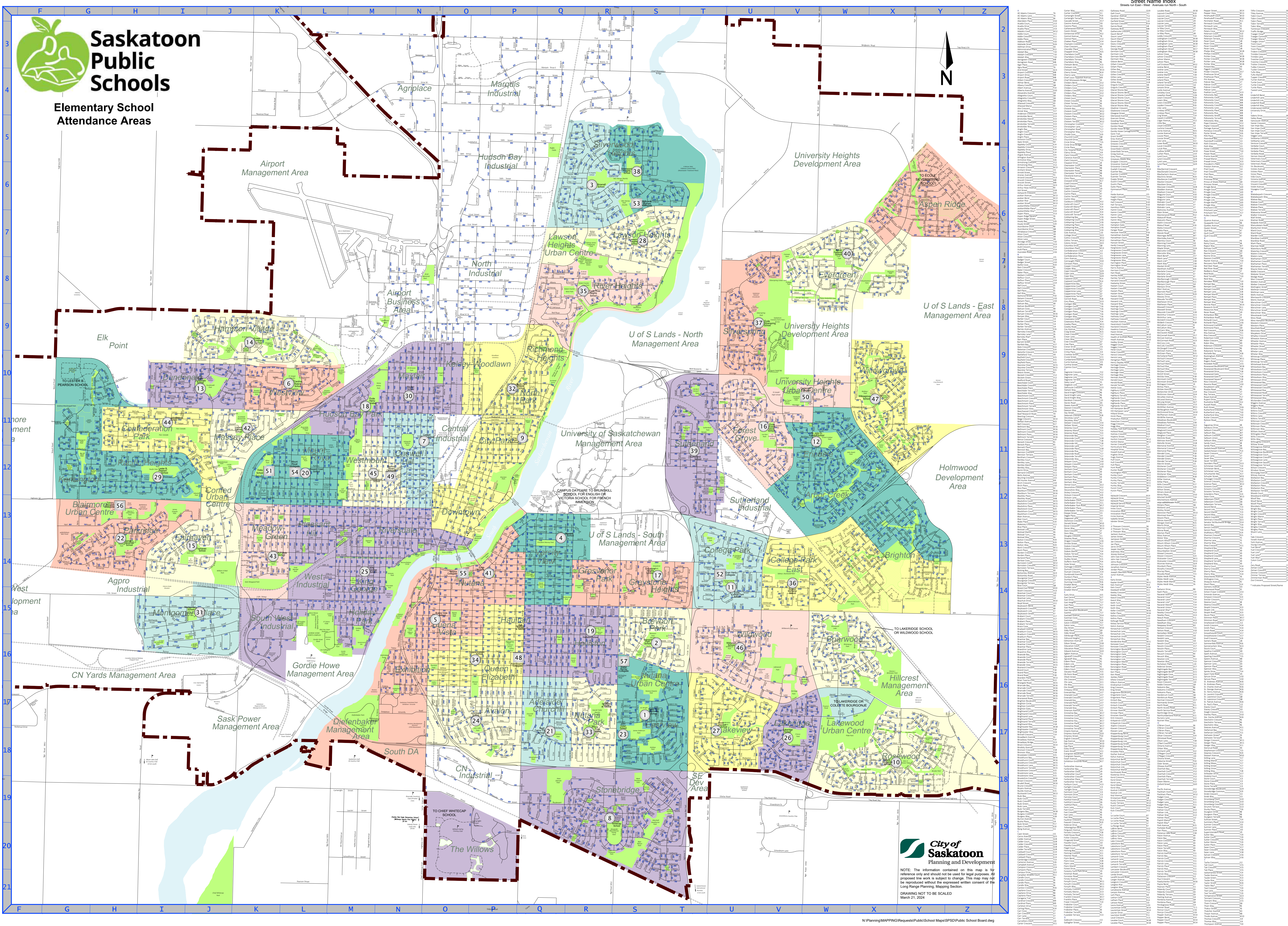


CITY LIMITS
ELEMENTARY
* Closed attendance area

- 1. ECOLE ALVIN BUCKWOLD SCHOOL
2. BREVOORT PARK SCHOOL
3. BROWNELL SCHOOL
4. BRUNSKILL SCHOOL
5. BUENA VISTA SCHOOL
6. CAROLINE ROBINS SCHOOL
7. CASWELL SCHOOL
8. CHIEF WHITECAP SCHOOL
9. CITY PARK SCHOOL
10. COLETTE BOURGONJE SCHOOL
11. ECOLE COLLEGE PARK SCHOOL
12. DR JOHN G. EGNATOFF SCHOOL
13. ECOLE DUNDONALD SCHOOL
14. ERNEST LINDNER SCHOOL
15. FAIRHAVEN SCHOOL
16. ECOLE FOREST GROVE SCHOOL
17. GREYSTONE HEIGHTS SCHOOL
18. ECOLE HENRY KELSEY
19. HOLLISTON SCHOOL
20. HOWARD COAD SCHOOL
21. HUGH CAIRNS VC SCHOOL
22. JAMES L. ALEXANDER SCHOOL
23. JOHN DOLAN SCHOOL
24. JOHN LAKE SCHOOL
25. KING GEORGE SCHOOL
26. LAKEVIEW SCHOOL
27. ECOLE LAKEVIEW SCHOOL
28. LAWSON HEIGHTS SCHOOL
29. LESTER B. PEARSON SCHOOL
30. MAYFAIR SCHOOL
31. MONTGOMERY SCHOOL
32. NORTH PARK WILSON SCHOOL
33. PRINCE PHILIP SCHOOL
34. QUEEN ELIZABETH SCHOOL
35. ECOLE RIVER HEIGHTS SCHOOL
36. ROLAND MICHENER SCHOOL
37. ECOLE SILVERSPRING SCHOOL
38. SILVERWOOD HEIGHTS SCHOOL
39. SUTHERLAND SCHOOL
40. SYLVIA FEDORUK SCHOOL
41. ECOLE VICTORIA
42. VINCENT MASSEY SCHOOL
43. WP BATE SCHOOL
44. WASHINGTON TOWN SCHOOL
45. WESTMOUNT SCHOOL
46. WILDWOOD SCHOOL
47. WILLOWCROVE SCHOOL

- 48. ADEN BOWMAN COLLEGIATE
49. BEDFORD ROAD COLLEGIATE
50. CENTENNIAL COLLEGIATE
51. ESTEY SCHOOL
52. EVAN HARDY COLLEGIATE
53. MARION M. GRAHAM COLLEGIATE
54. MOUNT ROYAL COLLEGIATE
55. NUTANA COLLEGIATE
56. TOMMY DOUGLAS COLLEGIATE
57. WALTER MURRAY COLLEGIATE

NOTE: Secondary schools do not have defined attendance areas



Elementary School Attendance Areas



City of Saskatoon Planning and Development
NOTE: The information contained on this map is for reference only and should not be used for legal purposes. All proposed line work is subject to change. This map may not be reproduced without the expressed written consent of the Long Range Planning, Mapping Section.
DRAWING NOT TO BE SCALED
March 21, 2024

Street Name Index: A detailed grid listing streets from East-West to North-South, organized by column (F-Z) and row (3-21).